

PROCESS SOLUTIONS
FOR HOTMELT COOLING



DrumCooler for R&D and production model **CCC-20/25** model **CCC-20/40**

The laboratory **DrumCoolers** model CCC-20/25 and CCC-20/40 are designed for R&D trials and small batch production.

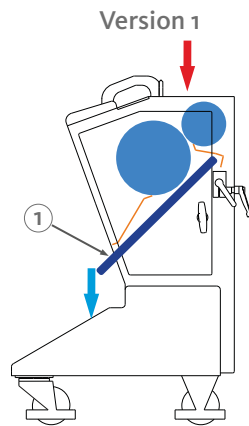
This new series of our small **DrumCooler** is due to its modular design available in 3 versions. The fully equipped version will roll out the product to a thin film. A belt is then pressing the product against the surface of a cooled drum and a flaker unit is breaking the solidified product into homogenous small flakes.

Your advantages

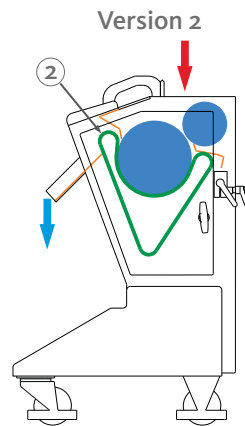
- compact design
- modular and upgradable design featuring 3 versions
- closed water loop of cooling media
- adjustable calender nip to control product film thickness
- special design featuring easy access and rapid cleaning
- simple installation
- for stand-alone operation with safety features
- available to rent



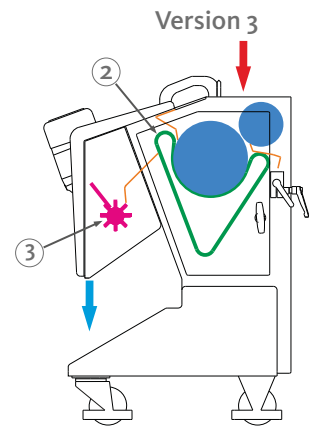
Modular and Upgradable Design



This version will roll out the hot melt into a thin film which will be cooled on a short path between the two drums. A cooled product chute ① (dark blue) is then guiding the solidified product to the product outlet.



This version will roll out the hot melt into a thin film. The product is then pressed with a belt ② (green) against the cooling drum and can be efficiently cooled and solidified with a long active cooling path. The solidified product is then guided to the product outlet.



This version will roll out the hot melt into a thin film. The product is then pressed with a belt ② (green) against the cooling drum and can be efficiently cooled and solidified with a long active cooling path. The solidified product is then guided to the flaker ③ (magenta) where it will be broken down into homogenous flakes.

model	CCC-20/25	CCC-20/40
width	720 mm	870 mm
length	690 mm	690 mm
height product inlet	880 - 1020 mm	880 - 1020 mm
height discharge	380 - 520 mm (version 1) 595 - 735 mm (version 2) 390 - 530 mm (version 3)	380 - 520 mm (version 1) 595 - 735 mm (version 2) 390 - 530 mm (version 3)
width cooling drum	250 mm	400 mm
total weight	approx. 250 kg	approx. 300 kg
voltage	110/200-250 V, 1-phase, 50/60 Hz	110/200-250 V, 1-phase, 50/60 Hz
power consumption	approx. 1 kW	approx. 1 kW
main fuse	10 A	10 A
throughput	approx. 30 kg/h*	approx. 50 kg/h*

* throughput is depending on the product and production parameter as well as the machine version, estimates are for the versions 2 and 3 with the belt

