

PROCESS SOLUTIONS
FOR HOTMELT COOLING



DrumCooler

CCC-95/60
CCC-95/100

The **DrumCoolers** type CCC are designed for continuous cooling and solidification of viscous products. They are distinguished by its high cooling efficiency as well as its minimum space requirement and small footprint.

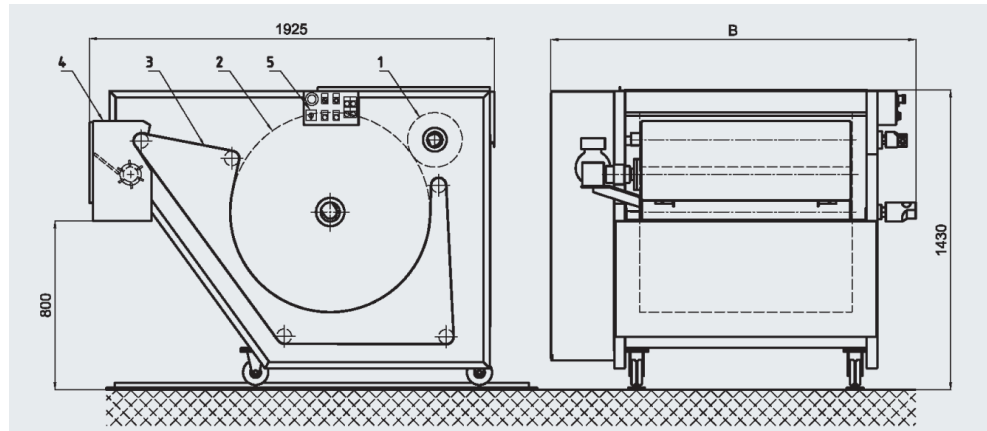
The product, which has been rolled into a thin film, is pressed up against the surface of a cooled drum and is fed into a crusher unit.

Your benefits

- Homogenous cooling of the product
- Cross contamination reducing through enclosed housing
- Convenient chip size for down-stream processes
- Compact design
- Adjustable product layer thickness
- Special design featuring easy access and quick cleaning
- Stainless steel execution
- Throughput

CCC-95/60
ca. 450 kg/h

CCC-95/100
ca. 750 kg/h



Legend:

Pos. 1 Squeezing drum
Pos. 3 Conveyor belt

Pos. 2 Cooling drum
Pos. 5 Control panel

Pos. 4 Crusher unit

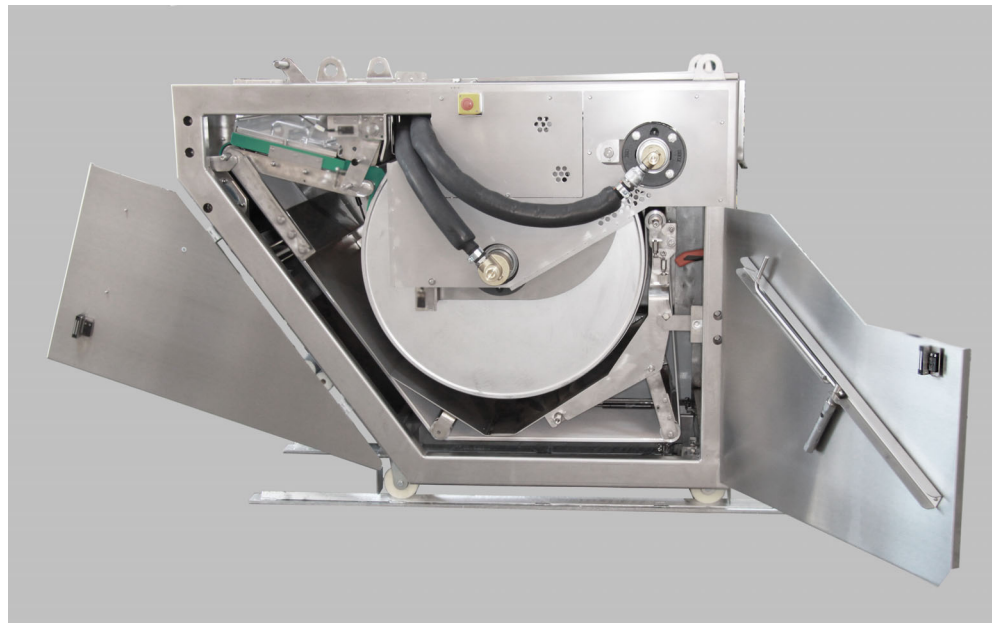
Technical data:

		CCC-95/60	CCC-95/100
Overall width	B	1340 mm	1740 mm
Overall length		1925 mm	
Product inlet height		1430 mm	
Discharge height		800 mm	
Width of cooling drum		610 mm	1010 mm
Ø Squeezing drum		260 mm	
Ø Cooling drum		950 mm	
Power consumption		2.3 kW	
Total net weight		1550 kg	2300 kg



Options:

- Electro-mechanical moving device
- Micro-crusher shaft
- Special material layer on drums
- ATEX design
- NEMA/UL or CSA control design



BBA InnoVA AG
Webereiweg 10
CH-4802 Strengebach
Switzerland
Phone +41 62 836 99 66
Fax +41 62 836 99 69
cooler@bba-innova.com
www.bba-innova.com

CCC-95/100 1.1 E

(- Pictures including options
- technical changes reserved)