

PROCESS SOLUTIONS
FOR HOTMELT COOLING



DrumCooler

CCCN-40/40
CCCN-40/60

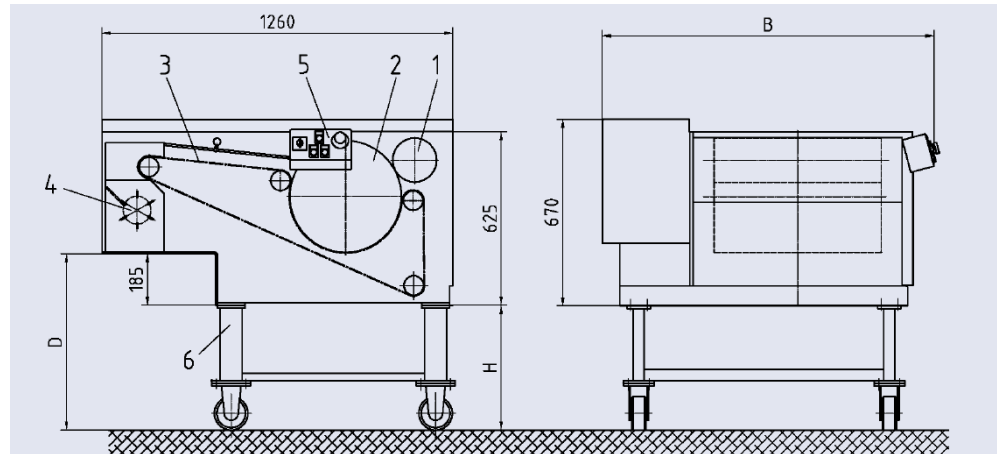
The **DrumCooler** type CCC are designed for continuous cooling and solidification of viscous products. They are distinguished by its high cooling efficiency as well as its minimum space requirement and small footprint.

The product, which has been rolled into a thin film, is pressed up against the surface of a cooled drum and is fed into a crusher unit.

Product benefits

- Homogenous cooling of the product
- Cross contamination reducing through enclosed housing
- Convenient chip size for down-stream processes
- Compact design
- Adjustable layer thickness
- Special design featuring easy access and quick cleaning
- Stainless steel execution
- Throughput

CCCN-40/40	CCCN-40/600
ca. 150 kg/h	ca. 250 kg/h
depends on product and production parameters	



Legend:

Pos. 1 Squeezing drum Pos. 2 Cooling drum Pos. 3 Conveyor belt
Pos. 4 Crusher unit Pos. 5 Control panel Pos. 6 Frame support

Technical data:

	CCC-40/40	CCC-40/60
Overall width B	1030 mm	1200 mm
Overall length		1290 mm
Product inlet height		H + 625 mm
Discharge height		H + 185 mm
Width of cooling drum	400 mm	600 mm
Ø Squeezing drum		158 mm
Ø Cooling drum		400 mm
Power consumption		1.3 kW
Total net weight	700 kg	750 kg

Options:

- Micro-crusher shaft
- Rails
- Special material layer on drums
- ATEX design
- NEMA/UL or CSA control design

